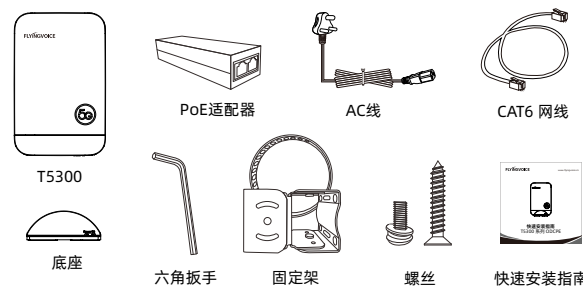


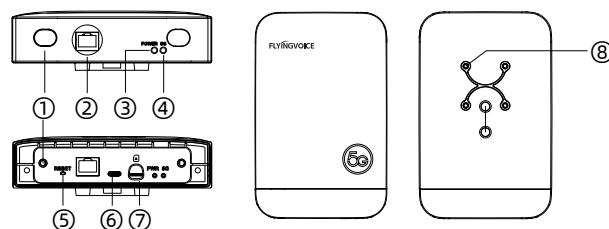
快速安装指南
T5300 系列 ODCPE

1 包装清单

请检查您购买的产品是否包含以下组成部件, 若缺少请与您的经销商联系。



2 产品结构



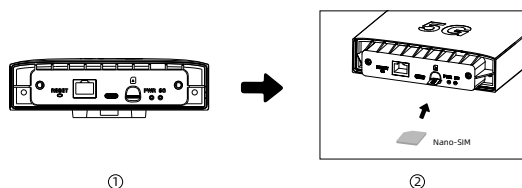
序号	名称	说明
①	底盖固定螺丝孔位	用于固定底盖
②	2.5 GE 网口	用于连接PoE电源适配器
③	电源指示灯	详见下表
④	5G 指示灯	详见下表
⑤	Reset 按键	重启设备: 短按1-5秒; 恢复出厂设置: 长按5秒以上
⑥	USB 3.0 Type-C	用于调试或紧急升级
⑦	SIM 卡槽	支持插入Nano-SIM卡供网
⑧	固定架安装孔位	用于安装固定架, 以将设备安装至柱子或墙面

	状态	描述
电源指示灯	红色常亮	设备异常, 详见用户手册
	绿色常亮	设备正常运行
	绿色快闪	设备升级中
	绿色慢闪	设备开机, 重启以及恢复出厂后重启
	熄灭	无电源

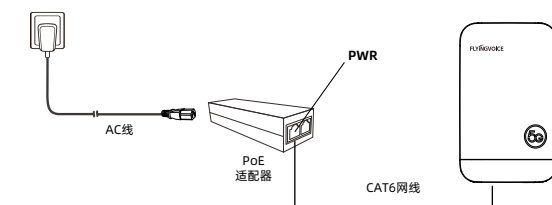
	状态	描述
5G指示灯	绿色常亮	信号强
	蓝色常亮	信号中等
	红色常亮	信号弱
	熄灭	没有插入SIM卡或无法正确识别SIM卡

3 设备安装

第一步 从运营商处获取标准的 Nano-SIM 卡, 将底部两颗螺丝用正确的螺丝刀旋下, 打开设备底盖, 插入SIM卡后将底盖盖好, 并用螺丝固定。



第二步 将标配的AC线与PoE适配器一端连接, 再将CAT6网线一端接入PoE适配器的PWR网口, 另一端接入设备底部的LAN口, 最后将AC线插入电源, 设备上电启动, 并自动接入互联网。

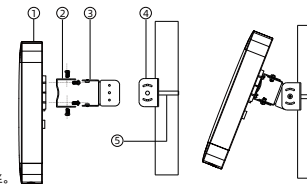


第三步 将设备根据您的应用场景固定。

设备支持以下三种安装方式, 请使用飞音标配的配件进行组装。

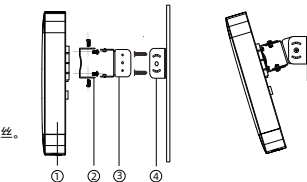
柱式安装

- 将 ④ 围绕安装杆并穿过 ① 的孔位, 拧紧 ⑤ 再将其螺丝拧紧以固定;
- 将 ② 用包装内附带的螺丝安装至外壳 ① 的背部;
- 将 ③ 安装到 ④ 上, 并用螺丝固定;
- 将 ①② 用螺丝整体固定于 ③ 上;
- 调整设备角度以获取最佳效果, 并拧紧所有螺丝。



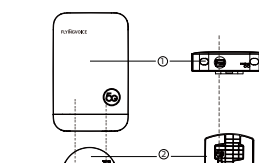
墙面安装

- 将 ④ 用包装附带的螺丝固定于墙面;
- 将 ② 用包装内附带的螺丝安装至外壳 ① 的背部;
- 将 ③ 安装到 ④ 上, 并用螺丝固定;
- 将 ①② 用标配的螺丝整体固定于 ③ 上;
- 调整设备角度以获取最佳效果, 并拧紧所有螺丝。



桌面安装

- 将 ② 置于桌面, 将 ① 的底部对准 ② 插入;
- 注意检查设备指示灯是否正常显示, 底部网线接口是否正露出, 以确保设备安装到位。



4 设备配置

若您需要进行Web配置, 可使用另一根网线, 一端接入PoE适配器的PoE口, 一端接入PC, 并在PC上通过浏览器访问设备LAN口的IP地址 (默认: 192.168.255.1), 浏览器将自动跳转至登录平台, 再输入登录账号和密码 (默认: admin/SN后六位), 则进入后台的状态页面, 即可进行相应配置。



飞音时代产品保修条例

尊敬的客户:

感谢您选购深圳飞音时代网络通讯技术有限公司的产品。自您购买产品之日起, 凡按照使用说明书安装使用, 一年内本公司免费维修, 一年后维修只收取维修工本费。非本公司产品质量原因引起的维修, 如使用不当, 保管不妥, 擅自拆机等原因造成的损坏, 将收取维修工本费。

保修卡 Warranty card

产品型号/Model		标签/Tag	
客户名称/Customer Name		购买日期/Data of Purchase	
客户地址/Customer Address			
联系人/Contact Person		电话/TeL	
经销单位/Distribution Units			
联系人/Contact Person		电话/TeL	
销售日期/Data of Sale			

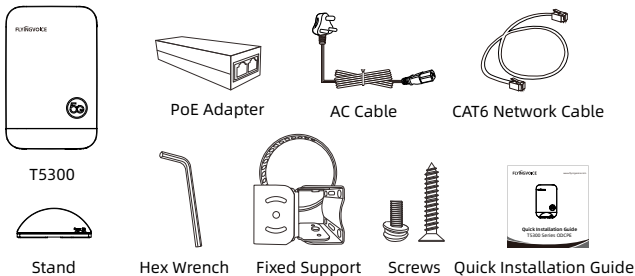
注: 申请产品维修时, 请把此保修卡和所购产品一起妥善送 (寄) 回售后服务部。



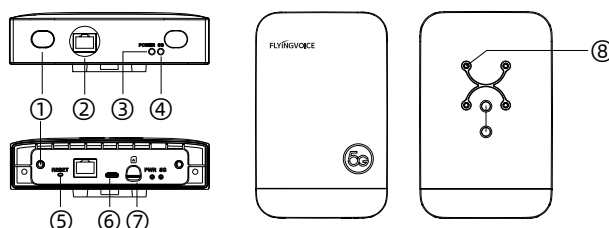
Quick Installation Guide
T5300 Series ODCPE

1 Packing List

The following items are included in your package. Please contact your service provider, if you find anything missing.



2 Physical Specification



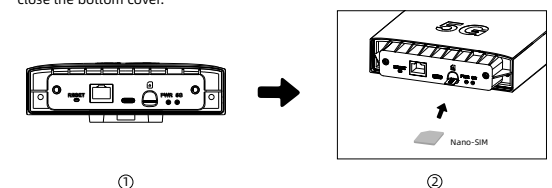
Number	Name	Description
①	Bottom Cover Screw Hole	Use for fixing the bottom cover
②	2.5 GE Network Port	Connect to PoE power adapter
③	Power Indicator	See the table below for details
④	5G Indicator	See the table below for details
⑤	Reset Button	Reboot: Press for 1-5s; Reset: Press for more than 5s
⑥	USB 3.0 Type-C	Configuration or emergency upgrade
⑦	SIM Card Slot	Insert a 5G SIM card to enable 5G network
⑧	Screws Holes of Fixed Support	Use for installing Fix Support

	Status	Description
Power Indicator	Red	Device abnormalities, see the user's manual for details
	Steady Green	Normal operation
	Flashing Fast Green	Upgrading
	Flashing Slow Green	Boot up, Reboot, and Reboot after reset
	Light Off	No power supply

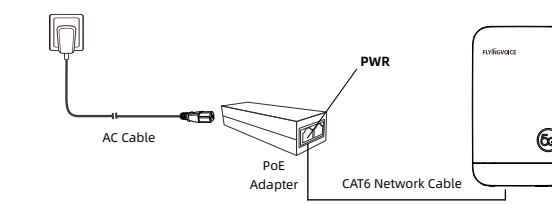
	Status	Description
5G Indicator	Steady Green	Strong signal
	Steady Blue	Moderate signal
	Steady Red	Weak signal
	Light Off	No SIM card or the SIM card can't be recognized correctly

3 Device Installation

1. Obtain a standard Nano-SIM card from your carrier, unscrew the two bottom screws with the correct screwdriver, open the bottom cover of the device, insert the SIM card and then close the bottom cover.



2. Connect the standard AC cable to one end of PoE adapter, then connect one end of the network cable to the PWR port of the PoE adapter, and the other end to the LAN port on the bottom of the device, and finally plug the AC cable into the power socket, the device will be power on, and automatically access the Internet.

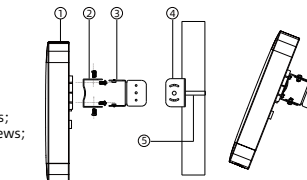


3. Install the device according to your scenario.

The device supports three installation methods, please use Flyingvoice's standard accessories.

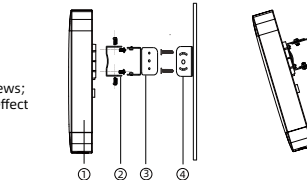
Pole-Fixed

- Put ④ around the mounting pole and through the hole of ①, tighten ⑤ and then tighten the screws to fix it;
- Attach ② to the back of ① with the screws included in the package;
- Attach ③ to ④ and fix them with the screws;
- Attach ① ② to ③ and fix them with the screws;
- Adjust the angle of the device to get best effect, and tighten all screws.



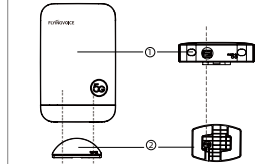
Wall-mounted

- Attach ④ to the wall with the screws included in the package;
- Attach ② to the back of ① with the screws included in the package;
- Attach ③ to ④ and fix it with the screws;
- Attach ① ② to ③ and fix them with the screws;
- Adjust the angle of the device to get best effect and tighten all screws.



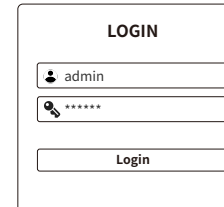
Desktop Install

- Place ② on the desktop and insert the bottom of ① against ②
- Check that the device indicator lights are properly displayed and that the bottom network port is properly exposed to ensure that the device is properly installed.



4 Device Configuration

If you need to configure the device on Web, please connect the PoE port of the PoE adapter to the PC with RJ45 cable, and enter the IP address of the LAN port of the device (default: 192.168.255.1) in the browser on the PC and it will automatically turn to the login platform, and then enter your login account and password (default: admin/last 6 digits of SN number), and then you will enter the status page of the web interface, and you can carry out the corresponding configuration.



Flyingvoice Product Warranty Regulations

Dear Customer:

Thank you for purchasing the products of Shenzhen Flyingvoice Network Technology Co.,Ltd.

Since the date of purchase, where the installation and use in accordance with the quick installation guide, our company will provide free maintenance within one year, after one year maintenance only charge the maintenance fee. Maintenance for non-product quality issues, such as improper use, improper storage, unauthorized disassembly and other causes for damage, will be charged for maintenance fee.

Note:

When applying for product maintenance, please send the Warranty Card in this quick installation guide (in another page) and the purchased product back to the customer service department properly for maintenance.